

MAN TGS 26-500 6x2-4 LL, Container frame/Container



Scanvo Trucks Danmark A/S
Hårup Skovvej 7, Hårup
8600 Silkeborg

Sælger
Salgsafdeling
salg@scanvo.dk
+45 8724 4370
+45 3046 2148 / +45 2498 2148

Basis		Cab		Chassis	
Type	Truck	Cab type	Sleeper cab	Wheelbase mm	4800
Aksel	6x2*4	Number of sleeper berths	1	Axle load, front kg	8000
Stand	Very fine	Mirror camera	✓	Axle load, rear kg	19000
Registration		Rear-view camera	✓	Toolbox	✓
Model year	2016	Radio	✓	Total length mm	9500
Reg. date	17-11-2016	Refrigerator	✓	Hydraulically steered rear axle	✓
Reg. no.	BC36936	Lane-assistent	✓	Tyres	
Latest inspection	18-12-2025	Cab airheater	✓	% remaining	40/40 - 50/50 - 40/40
Chassis number (VIN)	WMA21SZZ1HP082796	Distance radar	✓	Dimensions	
Ref. no.	7632	Cruise control	✓	315/80R22,5 - 315/70R22,5 - 315/70R22,5	
Engine and transmission		Load Indicator	✓	Brakes	
Hp	500	Multifunction steering wheel	✓	Disc brake	✓
Km	257600	Automatic air conditioning	✓	ABS	✓
Gear box	AS Tronic aut shift	Automatic disaster Brake (FCW)	✓	Coupling	
EURO type	6	Electric windows	✓	Electrical coupling	15 polet
Number of tanks	1	Electric mirrors	✓	Air-coupling	Doumatic
Litre of tank	Ca 350	Fahrhaus ausen		Trailer hitch	✓
Rear axle, single interchange	✓	Color	RAL 9010 white	Manufacturer	VBG 795
Ad-blue	✓	roof spoiler	✓	Air operated coupling device	✓
Adblue litre of tank	Ca 50	additional worklights	✓	V "KN air"	75
Service contract	✓	Blitz lights	✓	Coupling height mm	900
Without clutch pedal	✓	Weight		Suspension	
		Loading capacity kg	15800	Front, air	✓
		Overall weight kg	26000	Rear, air	✓
		Tare weight kg	10200		

Beskrivelse

MAN TGS 26-500 6x2-4 LL - Euro 6 - year 2016

Nice 1 owner serviced company truck

7450 mm swap body frame with container locks 800 mm to front stop + 5850 mm between locks + 800 mm to rear edge chassis
Ride height 1120 mm - tool box - 24 volt power socket rear + left side by batteries - LED reverse + work lights front + rear
2500 kg Zepro lift with remote control and 2200 mm steel plate

VBG 795 57 mm trailer / trailer hitch - coupling length 9500 mm - coupling height 900 mm

Rotating boogie - 4800 mm wheelbase

Sleeper cabin with high roof low entry - 1 berth - Air conditioning - cabin heater - cool box - mirror + rear camera

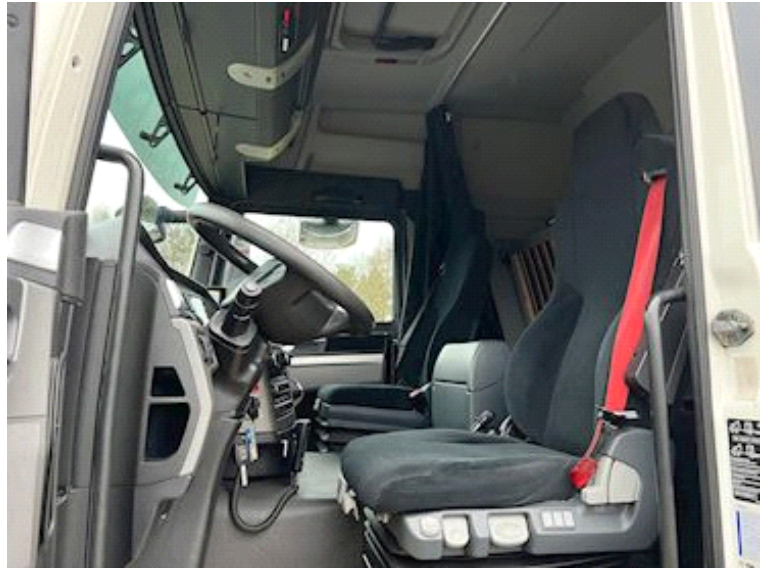
Can possibly be delivered as chassis - delivered with a new inspection from 18/12-2025 - brakes on the drive and trailer axle separated and discs turned and new brake pads + ABS sensor mounted

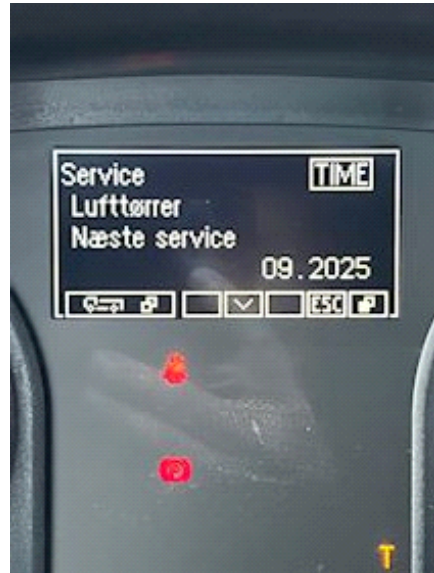
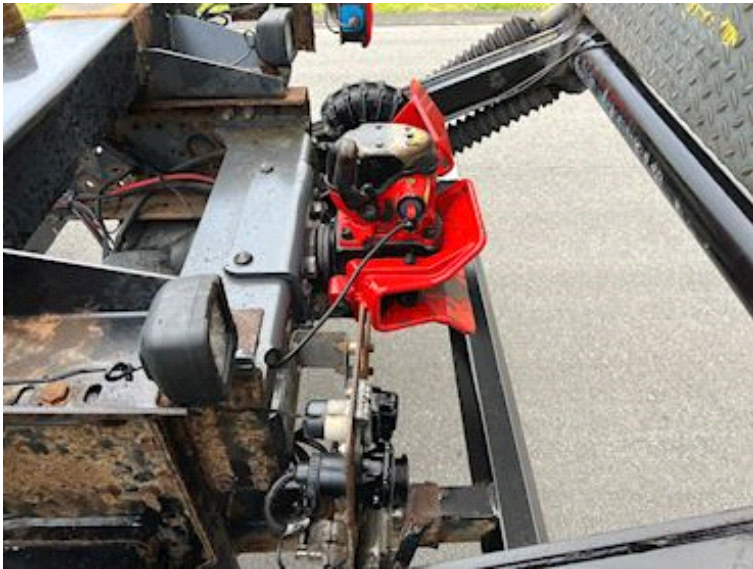
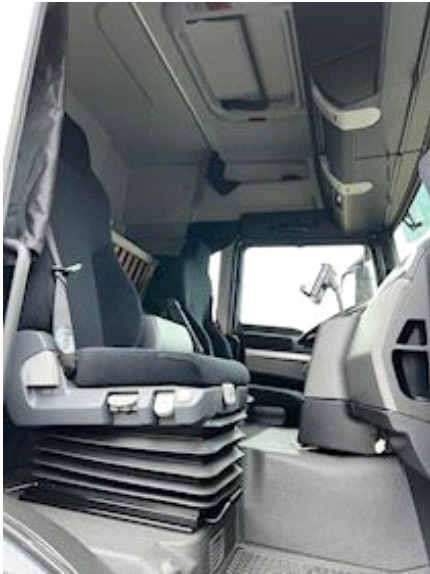
If interested, contact us at +45 8724 4370 / salg@scanvo.dk or see our selection at www.scanvo.dk

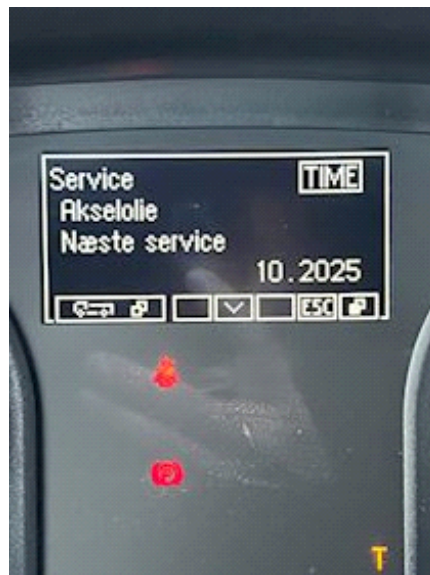
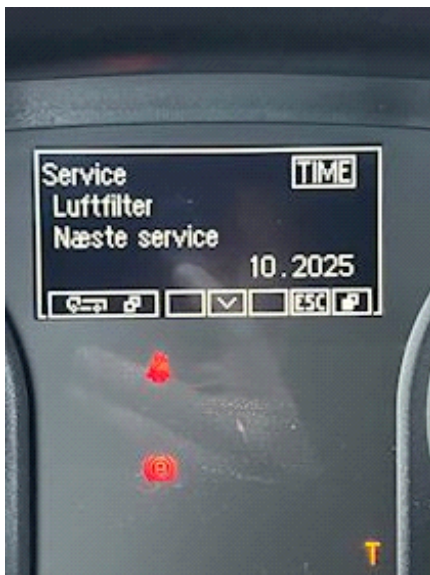
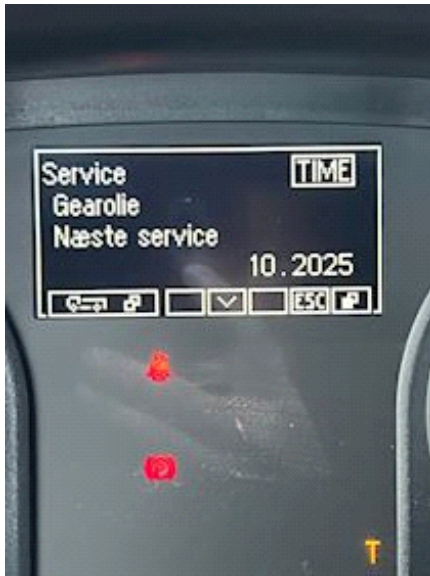
Also see our swap bodies and trailers / trailers on our website which provide great options in different body types

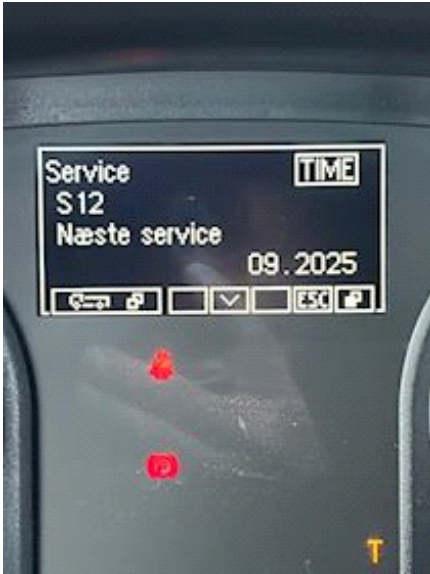












Nye og brugte containere
Mere end 100 enheder!

