



## Hangler 13,4 mtr Agro Line maskintrailer med hjulbrønde, Autotransport



Scanvo Trucks Danmark A/S  
Hårup Skovvej 7, Hårup  
8600 Silkeborg

Sælger  
Salgsafdeling  
salg@scanvo.dk  
+45 8724 4370  
+45 3046 2148 / +45 2498 2148

| Basis             |              | Chassis                     |              | Registration        |       |
|-------------------|--------------|-----------------------------|--------------|---------------------|-------|
| Type              | Semi-Trailer | Axle load, rear kg          | 24000        | Model year          | 2026  |
| Aksel             | 3            | Toolbox                     | ✓            | Ref. no.            | 5277  |
| Stand             | Brand new    | Total length mm             | 12000        | <b>Weight</b>       |       |
| <b>Suspension</b> |              | Shaft type                  | BPW          | Loading capacity kg | 31700 |
| Air               | ✓            | Stool height mm             | 1200         | Tare weight kg      | 10300 |
| <b>Brakes</b>     |              | <b>Tyres</b>                |              | King pin kg         | 18000 |
| Drum brakes       | ✓            | % remaining                 | 100          | <b>Dimensions</b>   |       |
| ABS               | ✓            | Dimensions                  | 205/65 R17,5 | External width mm   | 2550  |
|                   |              | <b>Truck body / box</b>     |              | Internal length mm  | 13410 |
|                   |              | Bottom                      | stål - træ   | Truck bed height mm | 850   |
|                   |              | Lashing rings in the bottom | ✓            |                     |       |
|                   |              | Foldable lashing rings      | ✓            |                     |       |

**Beskrivelse**

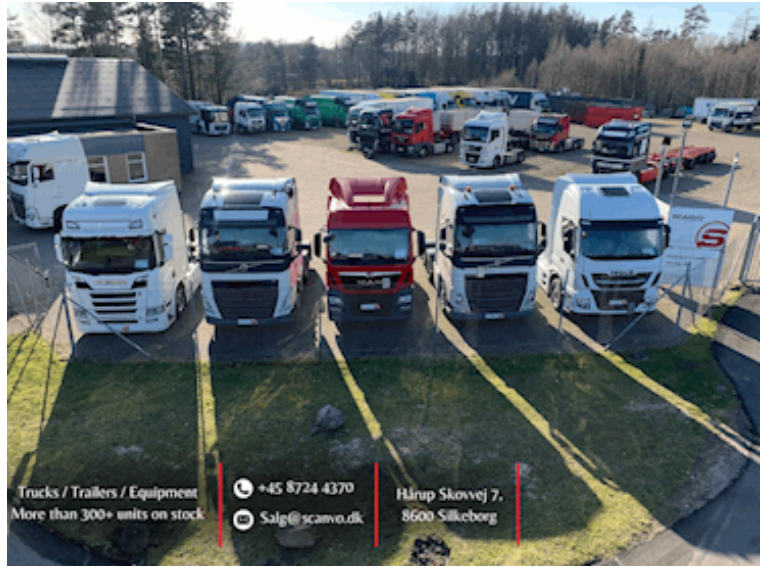
HANGLER 13.4 mtr AgroLine machine trailer - Large wheel wells and low loading height

- BPW axles with drum brakes
- Lift axle on axle 1
- Steering axle 3
- 205/65 R17.5" low profile tires
- 2 large wheel wells
- Removable steel covers over wheel wells
- 2,800mm hydraulic ramps - operated via 24 volt power plug from tractor
- The ramps are hydraulically movable to the side
- Slope + ramps with MegaGrip steel grid
- Climbing steel on the outside of the ramps and slope at the back - Distance between ramps at the inside approx.: 440mm
- length on the ramp 4000 mm - 9140 mm on a flat section
- Platform floor height approx. 850mm - Platform floor height in the wheel well approx. 460mm
- Length in wheel well at the bottom approx. 3,140mm - Length in wheel well at the top approx. 3,620mm - Width in wheel well approx. 760mm
- Width fixed part in the middle between wheel wells approx. 950mm
- Extendable widenings in the edge rails
- Hydraulic support legs at the rear
- Wireless remote control for all hydraulic functions
- Wide load signs
- 2 x LED flashing lights on edge rail at the rear to the side - 2 x LED flashing lights in the middle at the rear - 2 x LED flashing lights on wide load signs at the rear
- 1 x removable rotating beacon at the rear
- 6 x LED work lights
- 22 x 10-ton lashing points along the edge rails - 2 x foldable 10-ton lashing rings at the rear on the slope
- 6 x 8-ton lashing points along the middle - 20 x 5-ton lashing rings along the edge rails
- Storage space in the slope for the landing
- Removable aluminum sides on the landing
- Galvanized + painted edge rail RAL 9005 black

**Contact information:**

+45 87244370 / mail@scanvo.dk  
Send feedback

Nye og brugte containere  
Mere end 100 enheder!



Trucks / Trailers / Equipment  
More than 300+ units on stock

+45 8724 4370

Salg@scanvo.dk

Hårup Skovvej 7,  
8600 Silkeborg



