

Scania G410 LB 8x2*6 HLB, Autotransport



Scanvo Trucks Danmark A/S
 Hårup Skovvej 7, Hårup
 8600 Silkeborg

Sælger
 Salgsafdeling
 salg@scanvo.dk
 +45 8724 4370
 +45 3046 2148 / +45 2498 2148

Basis		Cab		Chassis	
Type	Truck	Cab type	CG19H	Wheelbase mm	5900
Aksel	8x2*6	Number of sleeper berths	1	Axle load, front kg	16000
Stand	Very fine	Engine cab heater	✓	Axle load, rear kg	19000
Registration		Radio	✓	Toolbox	✓
Model year	2016	Refrigerator	✓	Working light	✓
Reg. date	17-06-2016	Navigation	✓	Hydraulically steered rear axle	✓
Reg. no.	BB80362	Coffee machine	✓	Liftable axles	4.
Latest inspection	16-07-2025	Air in cabin for cleaning	✓	Suspension	
Chassis number (VIN)	YS2G8X20005415657	Air suspension cab	✓	Front, air	✓
Ref. no.	7846	Automatic air conditioning	✓	Rear, air	✓
Engine and transmission		Fahrhaus ausen		Dimensions	
Hp	410	Color	Rød - RAL ?	External width mm	2550
Km	554000	Xenon Lights	✓	Internal length mm	6750 + 2950
Gear box	GRS895 Opticruise aut shift	Lightbox	✓	Truck bed height mm	1080
EURO type	6	Fog lights	✓	Weight	
Number of tanks	1	extra spotlights	✓	Overall weight kg	32000
Litre of tank	400	additional worklights	✓	Tare weight kg	14950
Rear axle, single interchange	✓	Tyres		Truck body / box	
Adblue litre of tank	80	% remaining	75 - 50 - 75 - 75	Bottom	stål
Without clutch pedal	✓	Dimensions		Lift	
Auto transport		355/50R22,5 - 355/50R22,5 -		Ramp	
Platform length	9600	315//60R22,5 - 355/55R22,5		✓	
Coupling		Brakes			
Ball hitch (kg)	3500	Disc brake	✓		
Ball Draught	✓	ABS	✓		

Beskrivelse

Scania G410 LB 8x2*6 HLB

9650 mm low built heavy articulated truck from Boris Karosserifabrik with turning ramps L 2600 mm x W 1250 mm - bed height 1080 mm

Remote control winch - lots of spacious tool boxes - and lots of work lights
 3500 kg towing capacity

Full air suspension - 3 steering axles - 5900 mm axle distance - 450 ltr. diesel tank - Opticruise automatic gear shift - CG19 Highline cab with low entry - 1 berth - coffee machine - air conditioning - engine/cabin heater - navigation - radio - refrigerator

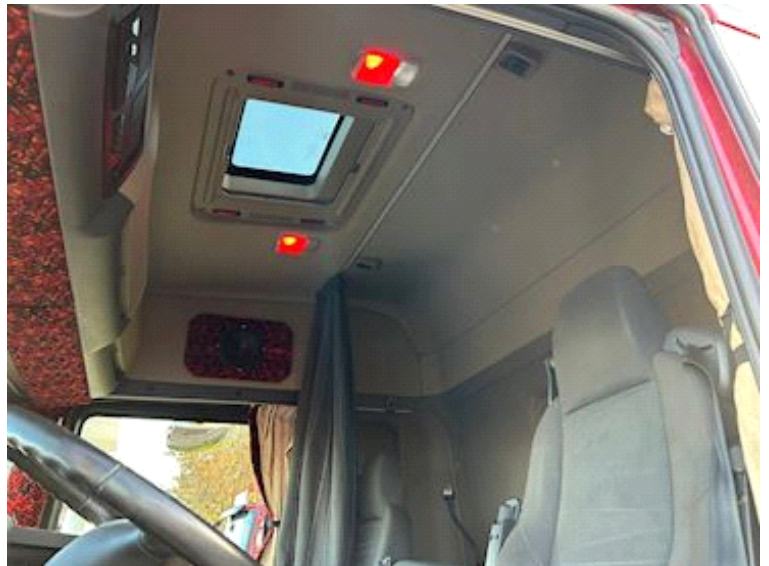
~~In very good condition - delivered with an inspection from 16/7-2025~~

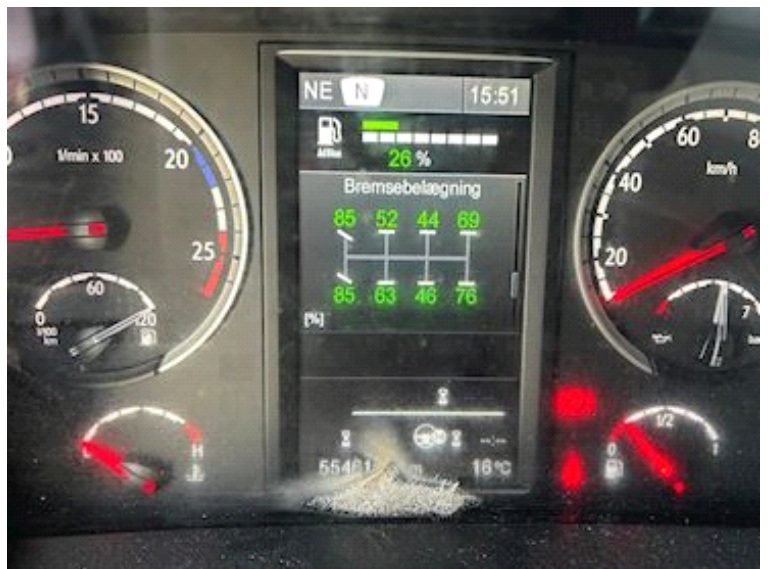
- AN OFFER YOU CAN'T REFUSE

We can also offer Scania G410 8x2*6 with Hiab 188E3 crane and the same body year 2016

Contact us for further info - salg@scanvo.dk or phone +45 87247370

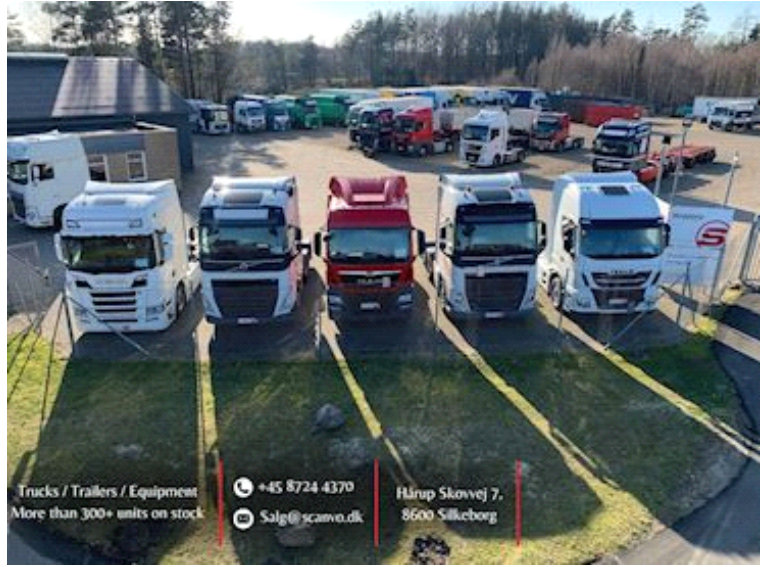








Nye og brugte containere
Mere end 100 enheder!



Trucks / Trailers / Equipment
More than 300+ units on stock

+45 8724 4370
Salg@scanvo.dk

Hårup Skovvej 7,
8600 Silkeborg