

# Leci 13,6 mtr. HMF 1820K3, Crane



Scanvo Trucks Danmark A/S  
 Hårup Skovvej 7, Hårup  
 8600 Silkeborg

Sælger  
 Salgsafdeling  
 salg@scanvo.dk  
 +45 8724 4370  
 +45 3046 2148 / +45 2498 2148

## Basis

Type	Semi-Trailer
Aksel	3
Stand	Fine

## Suspension

Air	✓
-----	---

## Brakes

Drum brakes	✓
ABS	✓

## Registration

Model year	2015
Reg. date	06-10-2015
Reg. no.	BB8311
Latest inspection	29-10-2024
Ref. no.	7834

## Chassis

Toolbox	✓
Hydraulic 2.	✓
Working light	✓
Shaft type	BPW
Liftable axles	2.
Compulsive shafts	3.

## Tyres

% remaining	20/30 - 30/30 - 20/60
Dimensions	385/65R22,5

## Weight

Loading capacity kg	29460
Overall weight kg	42000
Tare weight kg	12540
King pin kg	18000

## Beskrivelse

LECI open trailer

Inner length 13600 mm - 6300 mm front section to crane - the crane fills 850 mm - then 6300 mm open bed - 400 mm aluminum sides with tilt handle posts - hardwood land floor which is in good condition with steel profiles between - various recessed lashing rings in the bed edge and 2 rows further inside the bed floor - bed height 1400 mm - tool boxes - various work lights under the bed and flashing lights

HMF 1820K3 crane 3 hydraulic extensions - radio control - hook crane - year 2015 - reach 10.4 mtr. = lifts 1450 kg - lifting torque 16.1 tons - center mounted crane - last crane inspection 12/2024 - 2-line hydraulics for the crane towed via the truck

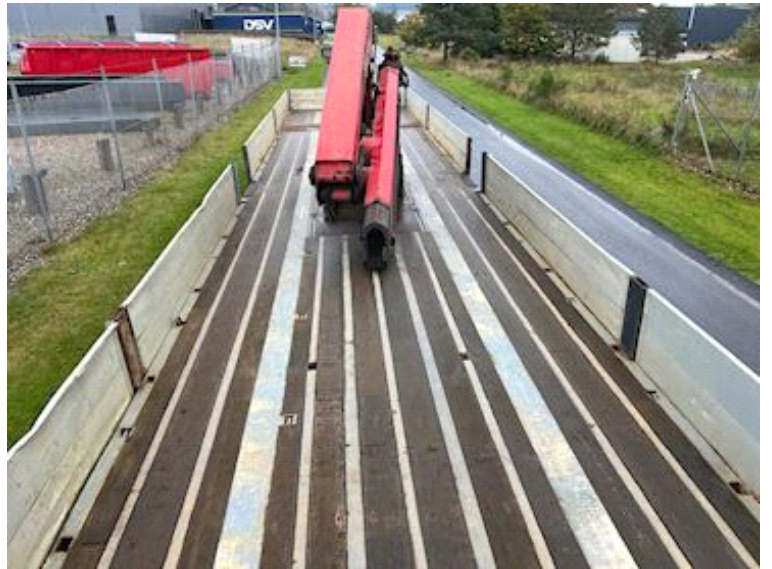
BPW axles - Tridex mechanically forced-controlled 3rd axle via the tractor's footboard - axle lift on 2nd axle - drum brakes - air suspension - 18,000 kg footboard pressure - total weight 42,000 kg

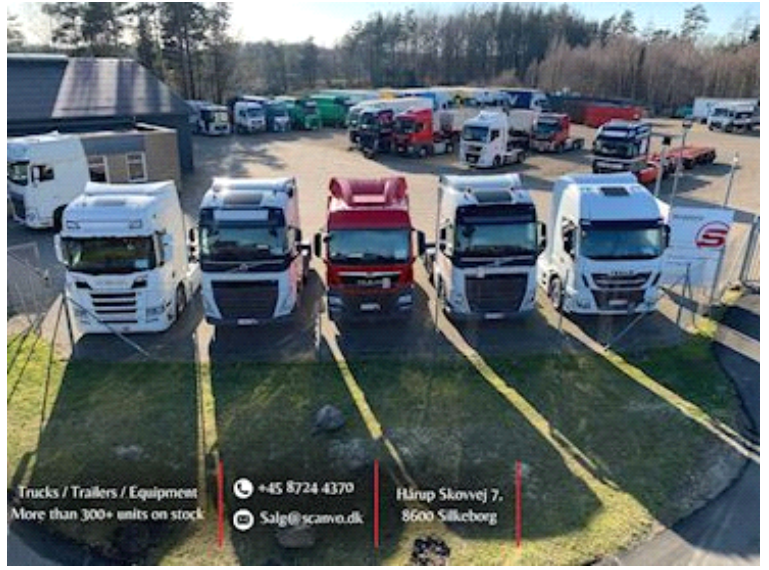
In regular condition - can be delivered with preparation for an additional price

Contact Scanvo +45 87244370 - or via email salg@scanvo.dk

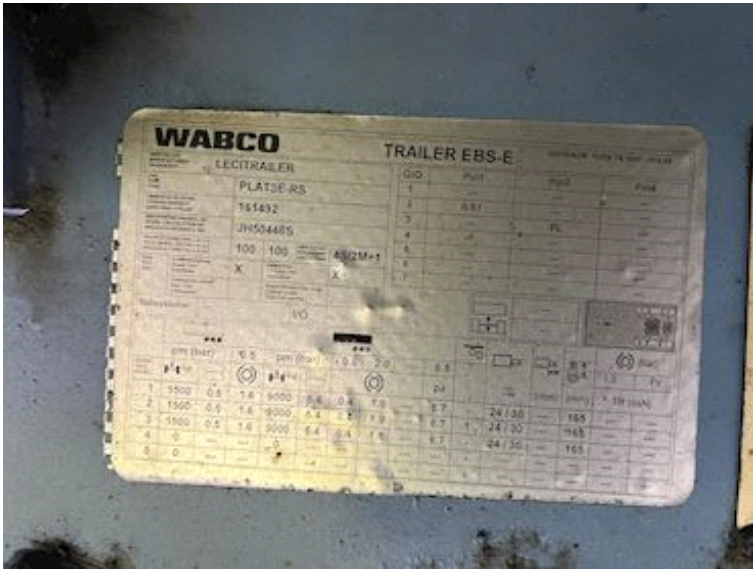
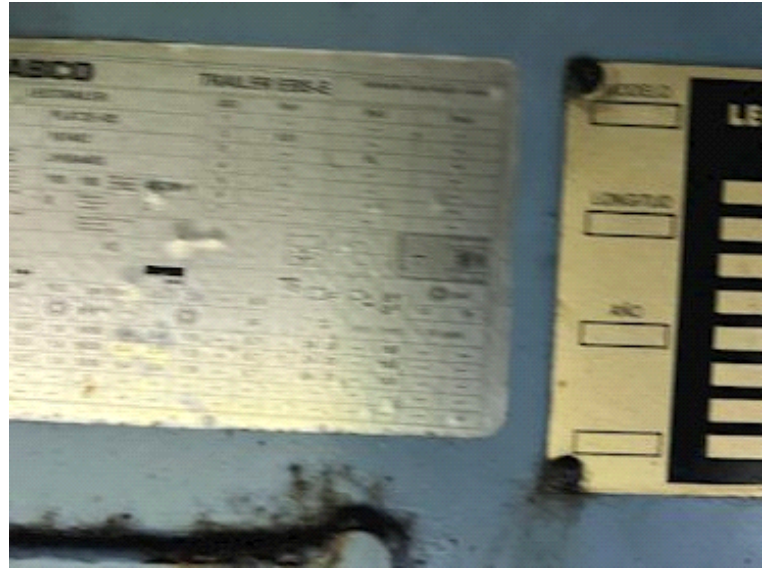
WE always have a large selection of new and used trailers - see more on our website [www.scanvo.dk](http://www.scanvo.dk)











Nye og brugte containere  
Mere end 100 enheder!

