

Iveco Daily 70C18 - dobbelt cab, Closed box



Scanvo Trucks Danmark A/S
 Hårup Skovvej 7, Hårup
 8600 Silkeborg

Sælger
 Salgsafdeling
 salg@scanvo.dk
 +45 8724 4370
 +45 3046 2148 / +45 2498 2148

Basis		Cab		Dimensions	
Type	Truck	Cab type	Dobbel - sleeper cab	External height mm	3300
Aksel	4x2	Air-conditioning	✓	External width mm	2300
Stand	As new	Number of sleeper berths	1	External length mm	7750
Registration		Rear-view camera	✓	Internal height mm	2300
Model year	2021	Engine cab heater	✓	Internal width mm	2200
Reg. date	18-11-2021	Radio	✓	Internal length mm	4100 + 1300 i frembygget del
Reg. no.	DD91509	Number of seats	2 + fører	Load highness at back mm	2250
Latest inspection	06-10-2025	Chassis		Light inside box	✓
Chassis number (VIN)	ZCFC670DX05415426	Wheelbase mm	4350	Cubic meters	20,7 + 2,3 i magasinrum
Ref. no.	7684	Axle load, front kg	2500	Truck bed height mm	980
Engine and transmission		Axle load, rear kg	5350	Doors	
Engine	3,0 ltr	Working light	✓	Rear doors	✓
Hp	180	Brakes		Truck body / box	
Km	81900	Disc brake	✓	Bottom	finer
Gear box	Aut shift	ABS	✓	Box type	Glasfiber
EURO type	6	Coupling		Make	Farre Karosseri
Number of tanks	1	Ball hitch (kg)	3500	Lashing rails on the sides	✓
Ad-blue	✓	Ball Draught	✓	Model year	2004
Without clutch pedal	✓	Suspension		Back doors	✓
Fahrhaus ausen		Front, parable	✓	Lift	
Color	RAL 5024 Pastellblau	Rear, conventional	✓	Lift kg	750
LED front light	✓	Weight		Make	zepro
Tyres		Loading capacity kg	2750	Radio remote controle	✓
% remaining	50 - 75	Overall weight kg	7000	Hight at platform mm	1450
Dimensions	225/75R16			Model year	2010
				Model	ZLU 75-110 SA
				Serie no.	246514

Beskrivelse

Iveco Daily 70C18 double / sleeping cabin

Fiberglass box from Farre Karosseri with built-in magazine for various moving equipment

Internal bed dimensions approx. L 4100 + magazine 1300 mm x H 2300 x W 2200 mm - compartment content 20.7m³ + magazine space above cab 2.2 m³

3 recessed tie rows in the box with 500 - 1200 - 1900 mm height - ceiling lamps

Webastro Air top 5000 air diesel powered boiler built into the box - as well as stations battery station in toolbox which can keep the boiler running during stationary use as well as 220 volt charging plug with inverter for 12 volt battery

2 tool boxes under the shelf + 2 LED lights

750 kg Zepro model ZLU 75-110 SA lift - remote control - 1450 mm aluminum lift plate

~~Ball hitch for 3,500 kg trailer~~

- AN OFFER YOU CAN'T REFUSE

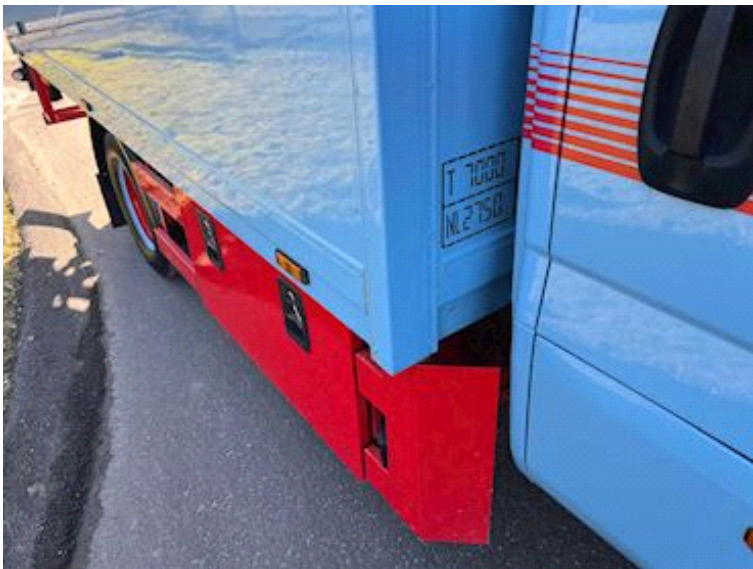
3 seats in total. in the cabin incl. driver - berth in the crew cabin - air conditioning - engine / cabin heater - rear view camera

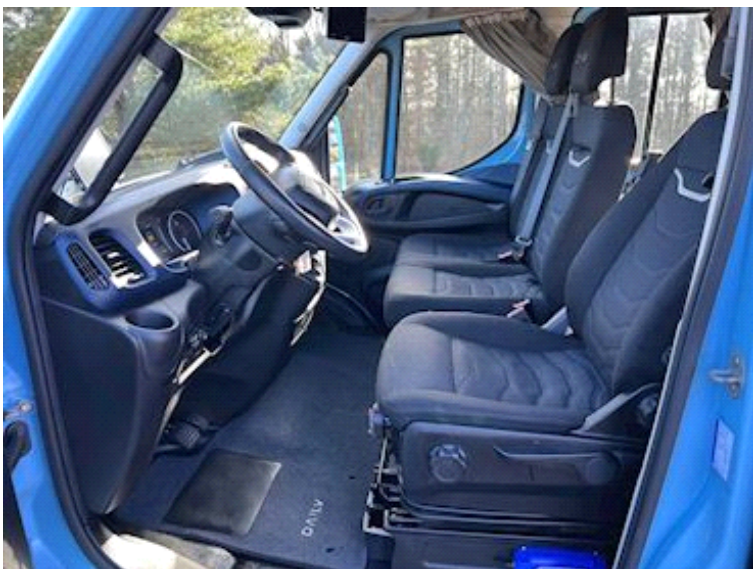
Cab + box painted in color scale RAL 5024 Pastelblau - appears almost as new

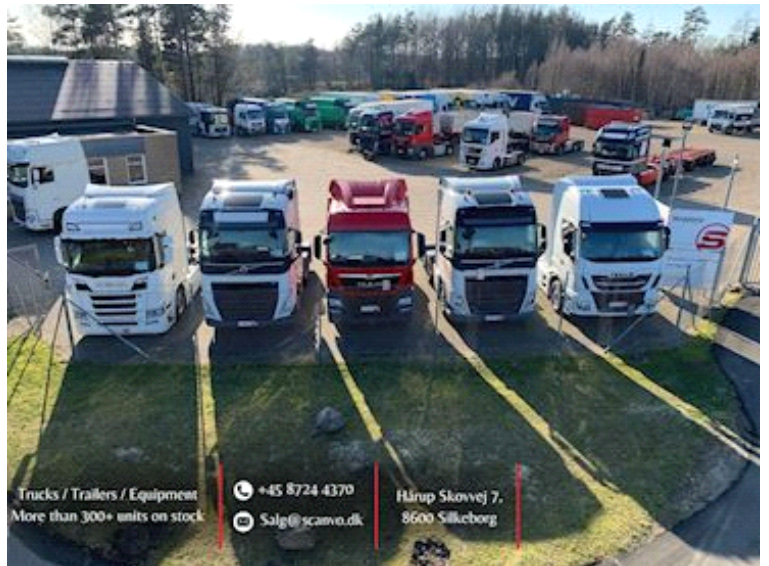
Internal service 1/2024 with oil change and oil + fuel filters next service km 105,609











Trucks / Trailers / Equipment
More than 300+ units on stock

+45 8724 4370
Salg@scanvo.dk

Hårup Skovvej 7,
8600 Silkeborg

