

# Mercedes-Benz Econic 1827 L, Closed box



Scanvo Trucks Danmark A/S  
 Hårup Skovvej 7, Hårup  
 8600 Silkeborg

Sælger  
 Salgsafdeling  
 salg@scanvo.dk  
 +45 8724 4370  
 +45 3046 2148 / +45 2498 2148

Basis	
Type	Truck
Aksel	4x2
Stand	Fine
Registration	
Model year	2017
Reg. date	19-10-2017
Reg. no.	DV81679
Latest inspection	07-08-2024
Chassis number (VIN)	WDB9560031V249631
Ref. no.	7815
Engine and transmission	
Engine	OM936LA 6-4
Hp	270
Km	195500
Gear box	Aut shift
EURO type	6
Number of tanks	1
Litre of tank	200
Rear axle, single interchange	✓
Ad-blue	✓
Adblue litre of tank	25
Without clutch pedal	✓
Dimensions	
External height mm	3820
Internal height mm	2710
Internal width mm	2460
Internal length mm	8000
Load highness at back mm	2690
Light inside box	✓
Cubic meters	53
Truck bed height mm	1060

Cab	
Cab type	Day cab low entry
Air-conditioning	✓
Radio	✓
Distance radar	✓
Automatic disaster Brake (FCW)	✓
Fahrhaus ausen	
Color	Lyse blå
Blitz lights	✓
Chassis	
Wheelbase mm	5400
Axle load, front kg	7500
Axle load, rear kg	11500
Toolbox	✓
Working light	✓
Tyres	
% remaining	20 - 20
Dimensions	315/60R22,5 - 315/60R22,5
Brakes	
Disc brake	✓
ABS	✓
Suspension	
Front, air	✓
Rear, air	✓

Weight	
Loading capacity kg	8400
Overall weight kg	18000
Tare weight kg	9600
Doors	
Side door right	ca B 900 x H 2000
Truck body / box	
Bottom	alu profil
Box type	Alu kasse
Make	Brdr. Plagborg
Lashing rails on the sides	✓
Serial no.	9264
Model year	2017
Lift	
Lift kg	2500
Make	Zepro
Radio remote controle	✓
Hight at platform mm	2000
Model year	2016
Model	ZHD 2500-150 MA
Serie no.	319733

## Beskrivelse

Mercedes Econic 1827 L

Alu box from Brdr. Plagborg build number 9264

~~internal bed dimensions: L 8000 x W 2460 x H 2710 mm mm - double deck at the front of the box with aluminum support beams - aluminum profile bed floor - side door W 950 x H 1950 mm - tool box - 2500 kg Zepro lift with remote control 2000 mm lift capacity REFUSE~~

euro 6 - full air suspension - automatic gear shift - euro 6 - low floor cab where entry / exit is extremely easy also access in / out of the passenger door - air conditioning - cabinets on the rear wall for storage - rear camera

Service info on display is from 9/2025

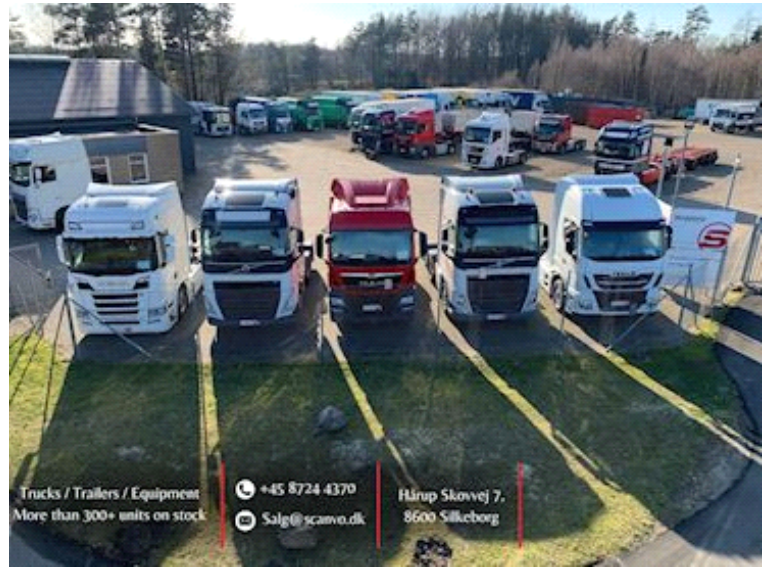
Can be delivered with or without preparation possibly. sold as chassis

Contact Scanvo +45 87244370 - email salg@scanvo.dk

See our large selection of trucks and other transport equipment at [www.scanvo.dk](http://www.scanvo.dk) - Always more than 300 units in stock









Nye og brugte containere  
Mere end 100 enheder!

