

Renault CM 430, Haken



Scanvo Trucks Danmark A/S
 Hårup Skovvej 7, Hårup
 8600 Silkeborg

Sælger
 Salgsafdeling
 salg@scanvo.dk
 +45 8724 4370
 +45 3046 2148 / +45 2498 2148

Basis		Cab		Brakes	
Type	Truck	Cab type	sleepercab C-2,5m	Disc brake	✓
Aksel	8x2*6	Number of sleeper berths	1	ABS	✓
Stand	As new	Rear-view camera	✓	Coupling	
Registration		Radio	✓	Electrical coupling	EBS + 13 polet lysstik
Model year	2020	Walkie	✓	Air-coupling	duromatic
Reg. date	21-08-2020	Navigation	✓	Manufacturer	VBG 720
Reg. no.	CT82459	Air in cabin for cleaning	✓	V "KN air"	63
Latest inspection	07-01-2025	Automatic air conditioning	✓	Coupling height mm	870
Chassis number (VIN)	VF630V165LD000384	Leather seats	✓	Suspension	
Ref. no.	7776	Fahrhaus ausen		Front, parable	✓
Engine and transmission		Warninglight	✓	Rear, air	✓
Engine	DTI11 430 EUVI	Color	RAL 3003	Weight	
Hp	430	Lightbox	✓	Overall weight kg	32000
Km	149000	Blitz lights	✓	Tare weight kg	12880
Chassis		Hook lift		Make	DALBY
Gear box	Optidriver aut shift	Wheelbase mm	4355	Type	XHM3C20M
EURO type	6	Axle load, front kg	18000	Load capacity	20
Number of tanks	1	Axle load, rear kg	19000	Serial number	5250PDX
Litre of tank	ca 300	Toolbox	✓	Model year	2020
Rear axle, single interchange	✓	Hydraulic installation	✓	Max container messure mm	6300 + ca 600 mm udskudskofanger
PTO engine	✓	Total length mm	8400	Articulated get hook lift	✓
Adblue litre of tank	ca 65	Hydraulically steered rear axle	✓	Last inspection	x
Without clutch pedal	✓	Liftable axles	4		
Tyres		Steerable axle	✓		
% remaining	30/30 - 50/80 - 90/90 - 70/50				
Dimensions	315/80R22,5				

Beskrivelse

Renault CM 430 HK 8x2*6 high-mounted chassis with good ground clearance

DALBY hooklift 20 ton with articulated arm - 5300 mm from center hook to center rollers in back + 300 mm to rear bumper - can drive with max 6300 mm container can be increased by using extension bumper with approx. 600 mm - transverse toolbox behind cab Hook arm can be driven approx. 1000 mm back - height of top edge of container rollers 1300 mm

2-way oil routed to the rear for tipping - VBG 795 trailer/trailer hitch with air control - coupling height 870 mm - coupling length 8400 mm

Hydraulic steering/lifting bogie axle - Euro 6 - Optidriver aut gearshift - parabolic suspension front - air rear - 4550 mm axle distance

Sleeper cabin cabin with low roof - 1 berth - leather seats - air conditioning - light sign on the roof - work light behind the cab - 2 x LED lights in the rear + step box - camera when towing - 2 pcs. rotating beacon - walkie - radio - etc. RAL 3003 factory painted cab

Service oil change at 146,000 km on 1/12-2024

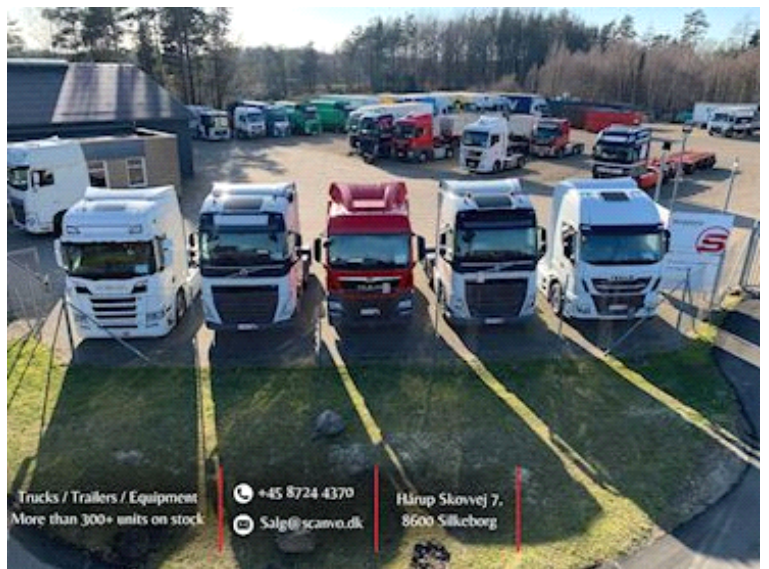
CONTACT SCANVO +45 87244370 - or via email salg@scanvo.dk

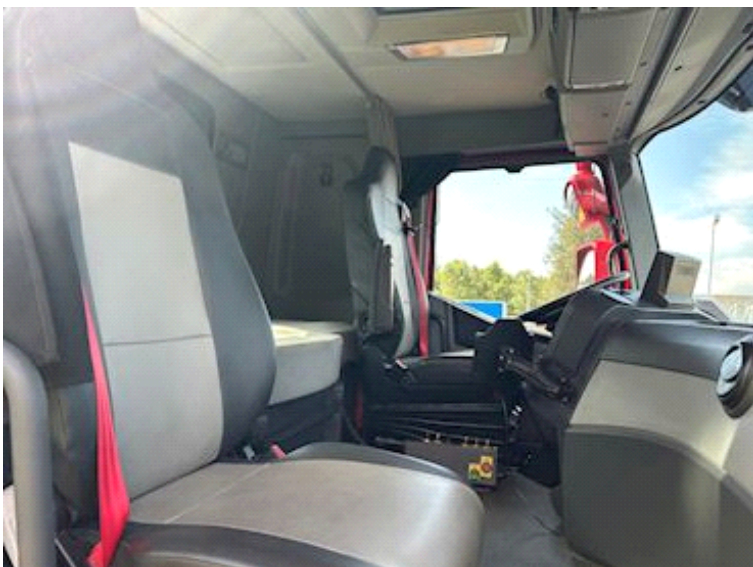
Always a large selection of newer used trucks trailers semi-trailer containers + much more Always more than 300 units in stock

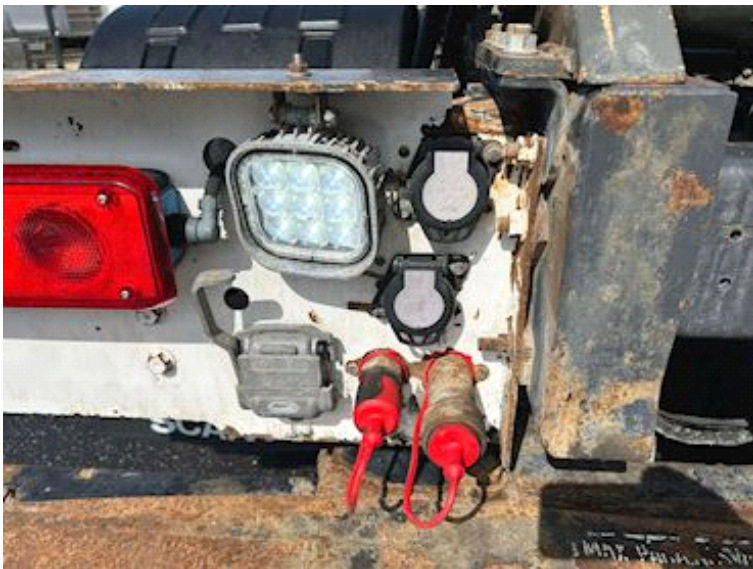


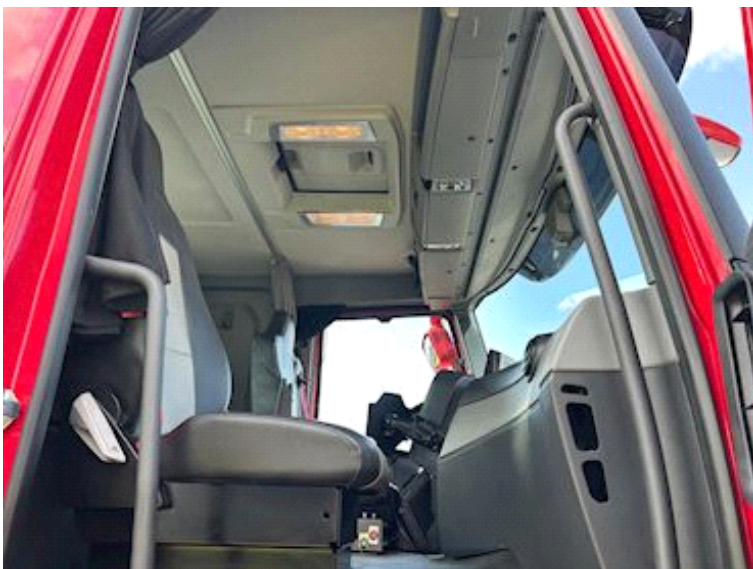
SCANVO
TRUCKS DANMARK A/S

- AN OFFER YOU CAN'T REFUSE









Nye og brugte containere
Mere end 100 enheder!

