

## Scancon S5520, open



Scanvo Trucks Danmark A/S  
Hårup Skovvej 7, Hårup  
8600 Silkeborg

Sælger  
Salgsafdeling  
salg@scanvo.dk  
+45 8724 4370  
+45 3046 2148 / +45 2498 2148

Basis		Registration		Weight	
Type	Containers	Model year	Fabriksny	Tare weight kg	ca 2050
Aksel		Chassis number (VIN)	S5520-4174	Container	
Stand	Brand new	Ref. no.	S5520	Side rolls	✓
				Side-hinged rear doors	✓
				Stop mm	

### Beskrivelse

Scancon Strong-Liner - model S5520

interior dimensions approx.: 5500 x H 1500 x W 2350 mm - external total length approx. 5780 mm - volume 19.4m3  
made with 5 mm bottom and 3 mm. sides in S235 steel - 750 mm. in side distance  
Side-hung rear doors  
Hook-up for hook and wire hoist  
Lash-bar long outside - footstep on front bulkhead + inside the box

net weight approx. 2050 kg

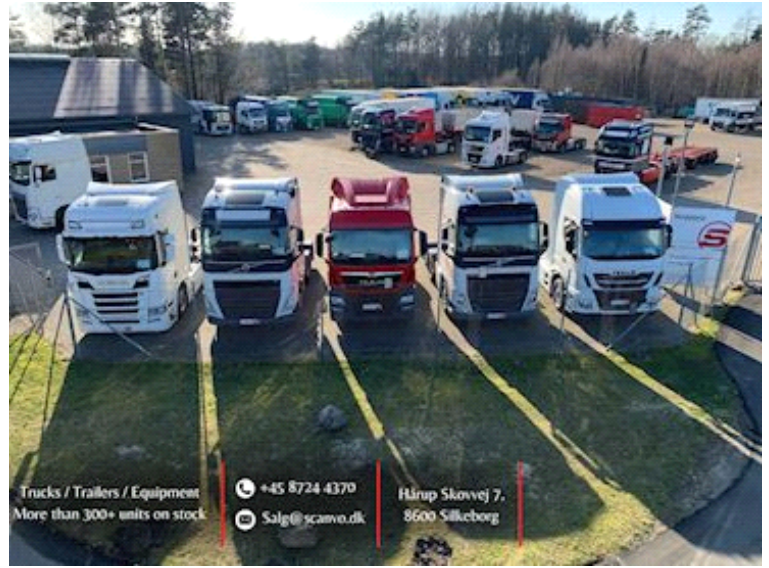
Currently delivered in RAL 3001 red - can also be ordered in optional RAL color

We have lots of new container boxes on the way home in several sizes!  
14 m3, 15 m3, 17 m3, 18 m3, 21 m3, 22 m3, 24 m3, 25 m3, 28 m3, 29 m3!

Call us today at +45 8724 4370 and inquire further or send us an email salg@scanvo.dk

See new and used containers at [www.scanvo.dk](http://www.scanvo.dk) or our catalog with new containers and spare parts for them [www.scanconcontainers.dk](http://www.scanconcontainers.dk)





Nye og brugte containere  
Mere end 100 enheder!

