

# Mercedes-Benz Econic 2630L ENA 4 kammer NTM, Refuse collection



**SCANVO**  
TRUCKS DANMARK A/S



Scanvo Trucks Danmark A/S  
Hårup Skovvej 7, Hårup  
8600 Silkeborg

Sælger  
Salgsafdeling  
salg@scanvo.dk  
+45 8724 4370  
+45 3046 2148 / +45 2498 2148

Basis	
Type	Truck
Aksel	6x2*4
Stand	Very fine
Registration	
Model year	2019
Reg. date	21-02-2019
Reg. no.	CH71893
Chassis number (VIN)	WDB9560331V254824
Ref. no.	7714
Engine and transmission	
Engine	OM936 6 cyl. 7.7 ltr
Hp	300
Km	104500
Gear box	Allison 3000P
EURO type	6
Number of tanks	1
Litre of tank	200
Rear axle, hub reduction	✓
Ad-blue	✓
PTO engine	✓
Adblue litre of tank	25
Tyres	
% remaining	70 - 80 - 90
Dimensions	315/70xR22,5

Cab	
Cab type	Low entry cab.
Air-conditioning	✓
Mirror camera	✓
Rear-view camera	✓
Engine cab heater	✓
Lane-assistent	✓
Number of seats	3
Cruise control	✓
Load Indicator	✓
Multifunction steering wheel	✓
Air in cabin for cleaning	✓
Regen-Sensor	✓
Automatic disaster Brake (FCW)	✓
Fahrhaus ausen	
Warninglight	✓
Color	Signal Red 2
additional worklights	✓
Blitz lights	✓
Brakes	
Disc brake	✓
ABS	✓
Engine brake	High Performance Engine Brake

Chassis	
Wheelbase mm	3900
Axle load, front kg	8000
Axle load, rear kg	19000
Toolbox	✓
Working light	✓
Hydraulically steered rear axle	✓
Shaft type	Axel ratio 6.824
Suspension	
Front, air	✓
Rear, air	✓
Dimensions	
External height mm	3600
External width mm	2550
External length mm	9750
Weight	
Loading capacity kg	8760
Overall weight kg	26000
Tare weight kg	17240
Compactor	
M3	9,5 + 4,8 + 4,0 + 1,9
municipal waste	✓
Make	NTM
Type	Quattro
Chassis no.	22201
Model year	2019
2 chambers	✓

## Beskrivelse

Mercedes Econic 2630 L ENA 6x2\*4 refuse truck - Diesel engine

NTM Quattro 4 chamber system with the following divisions 9.5 + 4.8 + 4.0 + 1.9 - can also be used as a 2 chamber system  
The compactor box is radiocontrolled and made as Hybrid / Epto and has approx. 4 hours of operation on electricity, after which it can be run on the vehicle's regular hydraulics.  
Battery pack 22kWh from Banke model B01605 serial number SN10221

tool / magazine box under construction - SKF central lubrication of the NTM recycling plant

Lots of work lights / Flashing lights facing backwards as well as rotating beacons and light signs on the roof and rear of the recycling plant

200 ltr diesel tank - 25 ltr AD Blue tank - 3900 mm axle distance - air suspension front + rear - hydraulically steerable rear axle

Day cab low entry - 2 passenger seats - air conditioning - Large 360 degree camera package with: reverse, front, and camera on the right and left side - FCW aut emergency braking against collision - reversing alarm - lane departure warning - Color RAL 3001 signal red 2

- AN OFFER YOU CAN'T REFUSE

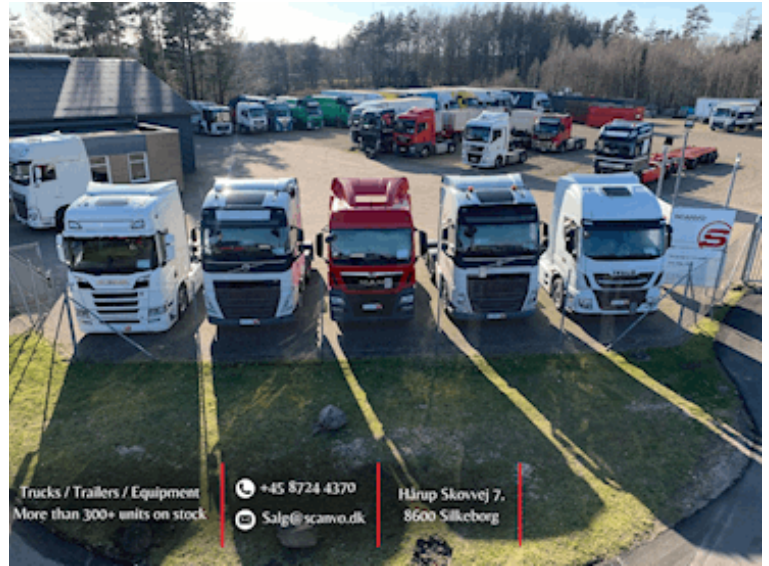
Appears in very good condition and regularly serviced by Mercedes according to display

Contact Scanvo Trucks +45 87244370 - or email [salg@scanvo.dk](mailto:salg@scanvo.dk)

See other refuse trucks on our website [www.scanvo.dk](http://www.scanvo.dk) + 300 other units



Nye og brugte containere  
Mere end 100 enheder!



Trucks / Trailers / Equipment  
More than 300+ units on stock

+45 8724 4370  
Salg@scanvo.dk

Hårup Skovvej 7,  
8600 Silkeborg

