

Iveco Daily 50C180 værksteds indretning - lift, Closed box



Scanvo Trucks Danmark A/S
Hårup Skovvej 7, Hårup
8600 Silkeborg

Sælger
Salgsafdeling
salg@scanvo.dk
+45 8724 4370
+45 3046 2148 / 2498 2148 / 2497 2148 / 4011 0944

Basis	
Type	Truck
Aksel	4x2
Stand	Very fine
Registration	
Model year	2017
Reg. date	02-01-2017
Reg. no.	BK26632
Latest inspection	23-12-2022
Chassis number (VIN)	ZCFC250D605129668
Ref. no.	Daily 50C18
Cab	
Engine cab heater	✓
Radio	✓
Digital tachograph	✓
Number of seats	2 incl. fører
Automatic air conditioning	✓
Coupling	
Ball hitch (kg)	3500
Ball Draught	✓

Engine and transmission	
Engine	3,0 ltr diesel
Hp	180
Km	258000
Gear box	aut shift
EURO type	6
Ad-blue	✓
Without clutch pedal	✓
Fahrhaus ausen	
Color	white
extra spotlights	✓
Blitz lights	✓
Chassis	
Axle load, front kg	2100
Axle load, rear kg	3700
Brakes	
Disc brake	✓
ABS	✓

Suspension	
Front, conventional	✓
Rear, air	✓
Weight	
Loading capacity kg	2800
Overall weight kg	5200
Tare weight kg	2400
Doors	
Rear doors	✓
Side doors, right	✓
Truck body / box	
Box type	kassevogn
Lift	
Lift kg	750
Make	Bär
Model	sidemonteret

Beskrivelse

Iveco Daily 50C180 box van - long / tall box van

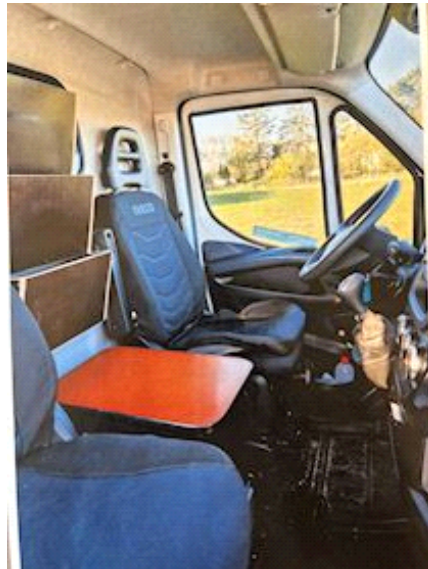
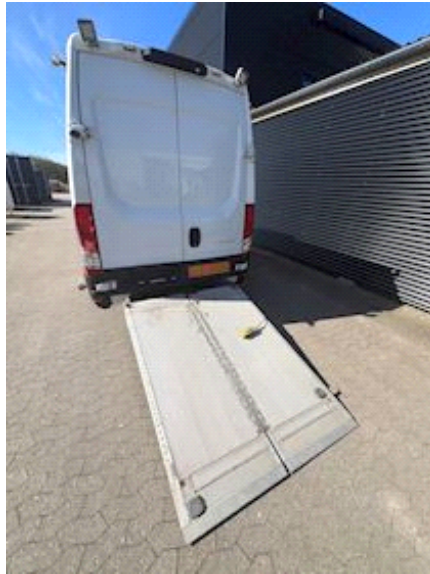
Furnished with workshop table - shelves - led light inside the box (acquisition price was DKK 90,000) - 3500 kg ball tow with removable ball head if the lift is used.
Well equipped with automatic gear change - automatic climate control - air-sprung rear axle - luxury seats - extra remote lights

Appears to be in very good condition and serviced - has been used as a fitter wagon all over Denmark and Scandinavia

Pt. in running order - sold for customer contact Scanvo Trucks for demonstration +45 87244370 - email salg@scanvo.dk

Visit our website www.scanvo.dk - here you will find more than 300 units of transport equipment, which we say every inquiry pays off - try us!





455

*Pålagt vedligeholdelse

KM 1000	EFFEKT	RELT KILOMETERTAL FOR ANVENDT AF RUTINEEFFEKT	DATO DAG MÅNED ÅR	REMARKER
30	S-O-P	4684	28.12.17	Thybo Biler
100	S-O-P	81205	23.10.18	IVECO
150	PI	120007	10.10.19	IVECO
200	S-O-P	169212	23.11.20	IVECO
250	S-O-P	200528	9.11.21	IVECO
300	S-O-P	231684	23.12.22	IVECO
350	PI			
400	PI			
450	PI			
500	PI			
550	PI			
600	PI			
650	PI			
700	PI			
750	PI			
800	PI			
850	PI			
900	PI			
950	PI			

Kode v. 200528/2021 Thybo Biler